

Q300[®] M Mini Kids



Rev.11/2023
Valid:12/2024

ORDER FORM

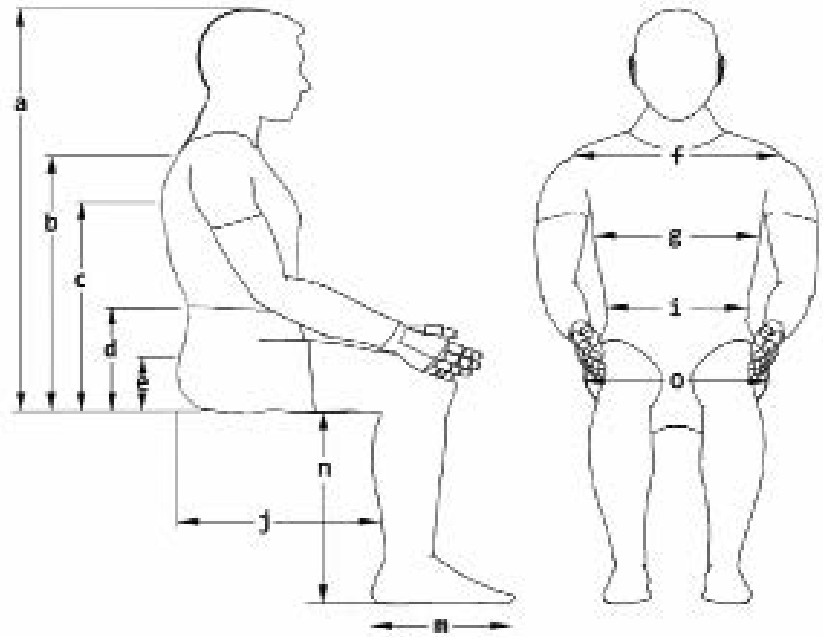
Errors and imissions excepted.

Billing Address Or Customer-ID			Shipping Address	Identical To Billing Address
C.-ID:			C.-ID:	
Name:			Name:	
Street:			Street:	
Town/PC:			Town/PC:	
E-Mail:			E-Mail:	
Phone:			Phone:	
Order Information			User Weight	
Order	Calculation	Built-4-Me [®]	User Weight Capacity: 75 kg	
Purchase Order No.:			User Weight: kg	
Art. No.: 2200030M-000		Reimbursement Code:		
Order Date:	Day	Month	Year	

Base Price € **XX.XXX,-**

Client Measurements

a) Top Of Head To Seat	mm
b) Top Of Shoulder To Seat	mm
c) Underarm To Seat	mm
d) Elbow To Seat	mm
e) Top Of Pelvis To Seat	mm
f) Shoulder Width	mm
g) Trunk Width	mm
i) Hip Width	mm
j) Actual Sitting Depth	mm
m) Foot Length	mm
n) Lower Leg Length	mm
o) Actual Seat Width	mm



Seating Specifications

All Bases Prepared For DAHL Docking Station		Seat Type	Kids Seat
Typical WC Weight	Without Batteries 80 kg	Seat Size Range	Width 280 mm - 400 mm, Depth 260 mm - 400 mm
	With Batteries from 103 kg	Seat To Floor Height Range	410-490 mm

MWD Base Specifications

User Weight Capacity	75 kg	Drive Wheels	12", 13" or 14" Drive Wheels (Black)
Base Size	Width Min. 520 mm	Tyres / Castors	7" Front / 7" Rear (Black)
Drive Control	VR2, Option R-Net	Charger	8 A Dual Mode Charger
Driving Range	Up To 31 km	Battery Size	41, 50 & 56 Ah Batteries
Drive Motors	2-Pole 6 /10 kph, 4-Pole 6/8 kph	Colour Accents	7 Colour Accents
Ground Clearance	70 mm	Frame Colour	Black

Base

Q300 M Mini Kids Drive Base

€

QZK000074	Q300 M (MWD Base Chair)	XXX,-
-----------	--------------------------------	-------

Motor Packages

€

QZK180011	2-Pole Motor, 6 kph/ 4 mph, Standard	XXX,-
QZK180012	2-Pole Motor, 6 kph/ 4 mph, Performance	XXX,-
QZK180013	2-Pole Motor, 10 kph/ 6.5 mph, Performance (1)	XXX,-
QZK180015	2-Pole Motor, 10 kph / 6.5 mph, Performance -Package-Includes LED Lights & Indicators, Rear View Mirror & R-Net Gyro (1)(2)	-
QZK180009	4-Pole Motor, 6 kph / 4 mph	XXX,-
QZK180010	4-Pole Motor, 8 kph / 5 mph (1)	XXX,-

Tracking

€

QZK110009	Traction Control System For R-Net (Gyro Technology)	XXX,-
QZK110014	Omit Traction Control System For R-Net	XXX,-

Drive Wheels

€

QZK070084	Drive Wheel, 12", Solid, Knobbly, Black	-
QZK070065	Drive Wheel, 13", Pneumatic, Knobbly, Black	XXX,-
QZK070069	Drive Wheel, 13", Solid, Knobbly, Black	XXX,-
QZK070034	Drive Wheel, 14", Pneumatic, Knobbly, Black	XXX,-
QZK070033	Drive Wheel, 14", Solid, Knobbly, Black	XXX,-

Castor Wheels

€

QZK080213	Castor Wheel, 7", Solid, Black	-
-----------	--------------------------------	---

Shroud Colours

€

QZK100576	Red	XXX,-
QZK100578	Blue	XXX,-
QZK100579	White	XXX,-
QZK100577	Black	-

Accent Colours

€

QZK140005	Apple Green (RAL 110 70 77)	XXX,-
QZK140004	Black (RAL 9005)	XXX,-
QZK140006	Orange (RAL 060 60 80)	XXX,-
QZK140007	Silver (RAL 9006)	XXX,-
QZK140002	Red (RAL 040 40 67)	XXX,-
QZK140003	Blue (RAL 260 40 45)	XXX,-
QZK140001	White (RAL 9010)	XXX,-

(1) Must Also Select R-Net Controls And R-Net Gyro

(2) Must Also Select R-Net Controls

Custom Shrouds		€
QZK140008	Grey Burst	XXX,-
QZK140009	Red Burst	XXX,-
QZK140010	Blue Burst	XXX,-
QZK140011	Pure White Burst	XXX,-
QZK140018	Purple Burst	XXX,-
QZK140019	Pink Burst	XXX,-
QZK140012	Flame Asteroid Grey	XXX,-
QZK140013	Flame Hot Red	XXX,-
QZK140014	Flame Sharp Blue	XXX,-
QZK140015	Flame Pure White	XXX,-
QZK140016	Floral White	XXX,-
QZK140017	Carbon	XXX,-

LED Lights & Indicators		€
QZK110201	LED Light And Indicator StVZO Approved (1)	-
QZK110209	Omit LED Light And Indicator	-

Seat Heights (2)		€
SH41	410 mm (3)	XXX,-
SH43	430 mm (4)	XXX,-
SH45	450 mm (5)	XXX,-
SH47	470 mm	XXX,-
SH49	490 mm	XXX,-

Batteries		€
Batteries		
QZK160006	Battery, 41 Ah, Maintenance-Free	XXX,-
QZK160016	Battery, 50 Ah, Maintenance-Free	XXX,-
QZK160013	Battery, 56 Ah, Maintenance-Free	XXX,-
QZK160009	Omit Batteries	XXX,-
Chargers		
QZK160101	Charger, Automatic, 220 V / 8 A	XXX,-
QZK160100	Charger, Automatic, 220 V / 8 A, UK	XXX,-
QZK160102	Charger, Classic, 220 V / 8 A, IP54	XXX,-
QZK160103	Charger, Automatic, 220 V / 10 A, UK	XXX,-
QZK160104	Charger, Automatic, 220 V / 10 A	XXX,-
QZK160109	Omit Charger	XXX,-

Powered Seating		€
Powered Seating Options		
QZK130002	Manual tilt (3° preset tilt)	XXX,-
QZK130004	Powered C.O.G tilt: 0° to 30° (6)	XXX,-
QZK130007	Powered C.O.G tilt: 0° to 50° (6) (7)	XXX,-
QZK130012	Powered negative C.O.G tilt: -5° to 25° (6)	XXX,-
QZK130009	Powered lift & tilt: 30cm lift, 0° to 30° tilt (6)	XXX,-

C-Me (8)		€
QZK110034	C-Me Function, Enabled (9)	XXX,-
QZK110035	C-Me Function, Disabled	XXX,-

(1) QZK110030 Lighting Module VR2, QZK110032 Actuator Control & Lights Module Or QZK110157 Lighting Module, R-Net, ISM-6L Required

(2) Measured From Front Of Seat Pan To Floor. Obtain Quote To Verify Seat To Floor Height. Seat Heights May Vary +/- 10 mm To Cover Tolerances And Drive wheel Size.

(3) Only With QZK130002 Manual Tilt

(4) Only With QZK130002 Manual Tilt Or QZK130004 Powered C.O.G tilt: 0 to 30°

(5) Not Available With QZK130005 Powered Negative C.O.G tilt: -5 to 25°

(6) Not With QZK110036 Remote Joystick, VR2. In Case Of R-Net: QZK110032 Actuator Control & Lights Module, R-Net, ISM-6L Required

(7) Not in combination with power recline set at 400 mm seat depth

(8) Only With QZK130009

(9) Max. Speed 3 mph/4,5km/h When Lifted

Backrest Frame Type		€
QZK030018	Mechanical fixed recline back (-4 to 16° in 3 steps)	XXX,-
QZK030026	Powered recline back (0 to 30°) (3)	XXX,-

Back Cushion Type		€
Sling Back (See Section A)		
QZK030150	Sling Back, With Tension Adjustable Straps	XXX,-
SEDEO LITE (See Section B)		
QZK030151	SEDEO LITE, Back Cushion	XXX,-
JAYJ3 (See Section C)		
QZK030054	JAY J3, Back Cushion	XXX,-
QZK030000	Omit Backrest Upholstery	XXX,-
JAY Shape (See Section D)		
QZK030152	JAY Shape, Back Cushion	XXX,-

A – Sling Back (Back Width Needs To Correspond To Seat Width)		€
QZK030301	Tension adjustable sling backrest (Factory Setting 410 mm height)	XXX,-

A – Backrest Height		€
BH38	380 mm	XXX,-
BH41	410 mm	XXX,-
BH435	435 mm	XXX,-
BH46	460 mm	XXX,-
BH485	485 mm	XXX,-

B – SEDEO LITE Backrest		€
QZK030214	SEDEO Lite Deep Contour Active (1) (2)	-

B – SEDEO LITE Back Cushion Cover		€
QZK030059	Back Cushion Cover, Incontinence Protection	XXX,-
QZK030108	Back Cushion Cover, Comfort	XXX,-

C – JAY J3 Back Size, Shallow Contour		€
JAY030034	JAY J3 Back, Shallow Contour, Mid Thoracic, Short, 300 mm	-
JAY030010	JAY J3 Back, Shallow Contour, Mid Thoracic, Medium, 340 mm	XXX,-
JAY030033	JAY J3 Back, Shallow Contour, Mid Thoracic, Tall, 380 mm	XXX,-
JAY030012	JAY J3 Back, Shallow Contour, Upper Thoracic, Short, 420 mm	XXX,-
JAY030019	JAY J3 Back, Shallow Contour, Upper Thoracic, Medium, 460 mm	XXX,-
JAY030025	JAY J3 Back, Shallow Contour, Upper Thoracic, Tall, 510 mm	XXX,-

C – JAY J3 Back Size, Mid Contour		€
JAY030035	JAY J3 Back, Mid Contour, Mid Thoracic, Short 300 mm	-
JAY030011	JAY J3 Back, Mid Contour, Mid Thoracic, Medium, 340 mm	XXX,-
JAY030018	JAY J3 Back, Mid Contour, Mid Thoracic, Tall, 380 mm	XXX,-
JAY030013	JAY J3 Back, Mid Contour, Upper Thoracic, Short, 420 mm	XXX,-
JAY030020	JAY J3 Back, Mid Contour, Upper Thoracic, Medium, 460 mm	XXX,-
JAY030026	JAY J3 Back, Mid Contour, Upper Thoracic, Tall, 510 mm	XXX,-

(1) Required To Achieve Seat Depth SD 26 (260 mm) / SD 28 (280 mm)

(2) Not Available With SD 38 (380 mm) / SD 40 (400 mm)

(3) Actuator Control VR2 Or R-Net Required

C – JAY J3 Back Size, Mid Deep Contour €

JAY030040	JAY J3 Back, Mid Deep Contour, Mid Thoracic, Short 300 mm	–
JAY030044	JAY J3 Back, Mid Deep Contour, Mid Thoracic, Medium 340 mm	XXX,-
JAY030041	JAY J3 Back, Mid Deep Contour, Mid Thoracic, Tall, 380 mm	XXX,-
JAY030045	JAY J3 Back, Mid Deep Contour, Upper Thoracic, Short, 420 mm	XXX,-
JAY030042	JAY J3 Back, Mid Deep Contour, Upper Thoracic, Medium, 460 mm	XXX,-
JAY030046	JAY J3 Back, Mid Deep Contour, Upper Thoracic, Tall, 500 mm	XXX,-

C – JAY J3 Lateral Thoracic Pads, Right €

JAY090020	JAY J3 Lateral Thoracic Pad, (LxH) 100 x 100 mm, Right	–
JAY090021	JAY J3 Lateral Thoracic Pad, (LxH) 100 x 127 mm, Right	XXX,-
JAY090022	JAY J3 Lateral Thoracic Pad, (LxH) 100 x 152 mm, Right	XXX,-
JAY090023	JAY J3 Lateral Thoracic Pad, (LxH) 152 x 100 mm, Right	XXX,-
JAY090024	JAY J3 Lateral Thoracic Pad, (LxH) 152 x 127 mm, Right	XXX,-
JAY090025	JAY J3 Lateral Thoracic Pad, (LxH) 152 x 152 mm, Right	XXX,-

C – JAY J3 Lateral Thoracic Pads, Left €

JAY090011	JAY J3 Lateral Thoracic Pad, (LxH) 100 x 100 mm, Left	XXX,-
JAY090012	JAY J3 Lateral Thoracic Pad, (LxH) 100 x 127 mm, Left	XXX,-
JAY090013	JAY J3 Lateral Thoracic Pad, (LxH) 100 x 152 mm, Left	XXX,-
JAY090014	JAY J3 Lateral Thoracic Pad, (LxH) 152 x 100 mm, Left	XXX,-
JAY090015	JAY J3 Lateral Thoracic Pad, (LxH) 152 x 127 mm, Left	XXX,-
JAY090016	JAY J3 Lateral Thoracic Pad, (LxH) 152 x 152 mm, Left	XXX,-

C – JAY J3 Lateral Thoracic Brackets €

JAY090026	JAY J3 Lateral Thoracic, Fixed Bracket, Right	–
JAY090017	JAY J3 Lateral Thoracic, Fixed Bracket, Left	–
JAY090028	JAY J3 Lateral Thoracic, Bracket, Swing Away, Right	–
JAY090019	JAY J3 Lateral Thoracic, Bracket, Swing Away, Left	–

D – JAY Shape Back €

JAY080001	JAY Shape Back (1)	XXX,-
JAY080002	JAY Shape Back, Oversized (2)(3)	XXX,-

D – JAY Shape Backrest Height €

BH41	410 mm	–
BH435	435 mm	–
BH46	460 mm	–
BH485	485 mm	–

D – JAY Shape Lateral Thoracic Pads €

JAY080011	JAY SHAPE Lateral Thoracic supports (Pair) - Support 100 x 120 mm (Pair)	–
-----------	--	---

Push Handles €

OZK030212	Standard Push Handle	XXX,-
OZK030213	Straight Push Handle (4)	XXX,-

(1) Not Available With SW 28, 30, 32 or 34

(2) Not Available With SW 28, 30, 32 or 34

(3) Supplied 25 mm Wider Than Seat Width

(4) Not Available With OZK030120 Headrest Receiver, Backrest Frame Mount , OZK110021 Dual Control Or OZK110020 Joystick Mounted As Dual Control

Headrest Pads €

QZK030430	SEDEO, Headrest Pad, Small, (LxH) 240 x 150 mm (1)	XXX,-
QZK030431	SEDEO, Headrest Pad, Small, With Cover, (LxH) 240 x 150 mm (1)	XXX,-
WHT030401	Whitmyer, Headrest Pad, Plush, (LxH) 203 x 127 mm (2)	XXX,-
WHT030402	Whitmyer, Headrest Pad, Plush, (LxH) 254 x 127 mm (2)	XXX,-
WHT030404	Whitmyer, Headrest Pad, Adjust-A-Plush, Narrow, (LxH) 355 x 76 mm (2)	XXX,-

Headrest Mounts €

QZK030433	SEDEO, Headrest Mount	XXX,-
QZK030434	SEDEO, Quick Release Headrest Mount	XXX,-
WHT030408	Whitmyer, Headrest Mount, LINX ²	XXX,-
WHT030409	Whitmyer, Headrest Mount, AXYS	XXX,-
WHT030410	Whitmyer, Headrest Mount, AXYS, Offset	XXX,-
WHT030411	Whitmyer, Headrest Mount, COBRA XTRA Flip Back	XXX,-

Headrest Receiver €

QZK030120	Headrest Receiver, Backrest Frame Mount	XXX,-
QZK030119	Headrest Receiver, Back Cushion Mount (3)	XXX,-

Seat & Cushion €

QZK020109	Firm Seat Board (Standard on Zippie Seat)	XXX,-
QZK020120	2" Standard Foam Seat Cushion	XXX,-
QZK020110	Omit Cushion	

Standard Seat Size €

Seat Width		
SW28	280 mm (7)	XXX,-
SW30	300 mm	XXX,-
SW32	320 mm	XXX,-
SW34	340 mm	XXX,-
SW36	360 mm	XXX,-
SW38	380 mm	XXX,-
SW40	400 mm (4)	XXX,-
Seat Depth		
SD26	260 mm (3)	XXX,-
SD28	280 mm (3)	XXX,-
SD30	300 mm	XXX,-
SD32	320 mm	XXX,-
SD34	340 mm	XXX,-
SD36	360 mm	XXX,-
SD38	380 mm	XXX,-
SD40	400 mm	XXX,-

Armrest Types €

QZK040122	Flip-up, height and angle adjustable	XXX,-
-----------	--------------------------------------	-------

Arm Pads €

QZK040023	Arm Pad, Integral Foam, 300 mm, Right	-
QZK040024	Arm Pad, Integral Foam, 300 mm, Left	XXX,-
QZK040062	Arm Pad, Integral Foam, 280x65 mm, Right (5)	XXX,-
QZK040063	Arm Pad, Integral Foam, 280x65 mm, Left (6)	XXX,-

(1) Only With QZK030433 SEDEO HEADREST MOUNT Or QZK030434 SEDEO, Quick Release Headrest Mount

(2) Only With WHT030409 Whitmyer Headrest Mount LINX², WHT030408 AXYS, WHT030410 AXYS, Offset Or WHT030411 COBRA XTRA Flip Back Headrest Mounts

(3) Only With QZK030214 SEDEO LITE Deep Contour Active

(4) Not With QZK040064, Side Guard Short In Rig

(5) Not with combination of QZK110056 Joystick Mounting, Parallel, Swing Way, Capsulated and QZK110052 Joystick Mounting Location, Right

(6) Not with combination of QZK110056 Joystick Mounting, Parallel, Swing Way, Capsulated and QZK110053 Joystick Mounting Location, Left

(7) Only with QZK040064

Side Guards		€
QZK040064	Side Guard Short In Rig (1)	XXX,-
QZK040033	Side Guard (2)	XXX,-
Centre Mount Legrest		€
QZK050112	Centre Mount Legrest (includes calf pads and flip up footplate)	XXX,-
Swing Away Legrest & Footplates		€
QZK050002	Hanger Angle 70° (Quickie Life style)	XXX,-
QZK050001	Hanger Angle 80° (Quickie Life style) (3)	XXX,-
QZK050115	Legrest Uni 80° Swing Away	XXX,-
QZK050041	Hanger Angle 90° (Zippie Salsa style with aluminium footplates and calf strap)	XXX,-
QZK050016	Legrest Manual Elevating Swing Away (Includes Flip Up Footplates)	XXX,-
Footplates for Swing Away Legrests		€
QZK050135	Footplate, Fixed, Pair (4)	XXX,-
QZK050137	Footplate, Angle Adjustable , Pair (for Uni legrest) (4)	XXX,-
QZK050050	Footplate, Divided , Aluminium, Angle-Adjustable, Flip-Up (Sideways), Heel Loop, Black (3) (5)	XXX,-
QZK050167	Footplates, High Mount - Recommended for short LLL (3) (5)	XXX,-
	QZK050168 Short Clamp (90 mm)	XXX,-
	QZK050169 Long Clamp (121 mm)	XXX,-
Accessories		€
QZK090100	Transportation tie down points (Included as Standard)	XXX,-
QZK090171	Adjustable Lap strap	XXX,-
QZK090040	Swing-away tray table	XXX,-
QZK160014	24V Auxiliary Battery Supply (6)	XXX,-
QZK160015	Omit 24V Auxiliary Battery Supply	XXX,-
QZK090110	Rear View Mirror, Right (7)	XXX,-
QZK090118	Rear View Mirror, Left (7)	XXX,-
Remote Joystick – VR2		€
QZK110036	Remote Joystick, VR2	XXX,-
QZK110037	Remote Joystick, VR2 , 2 Actuators	XXX,-
QZK110040	Remote Joystick, VR2, 2 Actuators and Lights	XXX,-
Joystick Mounting		€
QZK110082	Joystick Mounting, Parallel, Swing Away	XXX,-
QZK110056	Joystick Mounting, Parallel, Swing Away, Capsulated (8)	XXX,-
Joystick Mounting Location		€
QZK110052	Joystick Mounting Location, Right	XXX,-
QZK110053	Joystick Mounting Location, Left	XXX,-
Joystick Knobs (optional)		€
QZK090505	Joystick Knob, Golf Ball, Ø 42 mm	XXX,-
QZK090506	Joystick Knob, T-Bar, 82 mm Wide	XXX,-
QZK090507	Joystick Knob, Soft Ball, Ø 70 mm	XXX,-
QZK090508	Joystick Knob, Ball, Ø 35 mm	XXX,-
QZK090045	Joystick Knob, Allround, Ball Ø 48 mm	XXX,-
QZK090509	Joystick Knob, Chin Cup, Ø 37 mm	XXX,-
QZK090512	Joystick Knob, Stick, 80 x 15 mm	XXX,-
QZK090511	Joystick Knob, Mushroom, Ø 45 mm	XXX,-

(1) Reduces SW By 20 mm

(2) Not With SW 28 (280 mm)

(3) Not With QZK130012 Powered Negative C.O.G Tilt -5 to 25°

(4) Only With QZK050115 Legrest Uni 80° Swingaway

(5) Only With QZK050002/1 Hanger Angle 70°/80°

(6) Only With QZK160006 Battery, 41 Ah, Maintenance-Free

(7) Not In Combination With Same Entry Side QZK090040 Tray Table

(8) Not With QZK040062/3

Electronic Programmer – VR2 €

QZK090065	Mobility Programmer With Dongle, VR2	XXX,-
-----------	--------------------------------------	-------

Electronic Accessories Miscellaneous

QZK090063	DTT Hand Held Programmer For VR2 With Connector Cable	XXX,-
-----------	---	-------

Power Module – VR2 €

QZK110001	Power module , VR2, 70A (1)	XXX,-
QZK110002	Power module , VR2, 90A (2)	XXX,-

Lighting Module - VR2 €

QZK110030	Lighting Module, VR2 (3)	XXX,-
-----------	--------------------------	-------

Attendant Controls €

QZK110021	Dual Control	–
QZK110020	Joystick Mounted As Attendant Control (4) (5)	–

4-Actuator Control Box (Direct Actuator) €

QZK110054	4-Actuator Control Box Attached To Armrest, Right	XXX,-
QZK110055	4-Actuator Control Box Attached To Armrest, Left	XXX,-

Remote Joystick – R-Net €

QZK110015	Remote Joystick, R-Net, LED, Actuators	XXX,-
QZK110016	Remote Joystick, R-Net, LED, Actuators And Lights	XXX,-
QZK110017	Remote Joystick, R-Net, Colour LCD	XXX,-
QZK110018	Remote Joystick, R-Net, Colour LCD, Heavy Duty (6)	XXX,-
QZK110013	Remote Joystick, R-Net, High Resolution Colour LCD, Advanced, Infrared Control Included	XXX,-
QZK110023	Remote Joystick, R-Net, High Resolution Colour LCD, Advanced, Infrared And Bluetooth Control Included	XXX,-
QZK110019	Omit Remote Joystick, R-Net	XXX,-

Joystick Mounting €

QZK110082	Joystick Mounting, Parallel, Swing Away	XXX,-
QZK110056	Joystick Mounting, Parallel, Swing Away, Capsulated	XXX,-

Joystick Mounting Location €

QZK110052	Joystick Mounting Location, Right	XXX,-
QZK110053	Joystick Mounting Location, Left	XXX,-

Display Language Selection €

QZK119000	German	QZK119004	Portuguese	QZK119009	Swedish	QZK119013	Slovak
QZK119001	English	QZK119005	Italian	QZK119010	Greek	QZK119014	Polish
QZK119002	French	QZK119006	Dutch	QZK119011	Finnish	QZK119015	Danish
QZK119003	Spanish	QZK119008	Norwegian	QZK119012	Czech		

Joystick Knobs (optional) €

QZK090505	Joystick Knob, Golf Ball, Ø 42 mm	XXX,-
QZK090506	Joystick Knob, T-Bar, 82 mm Wide	XXX,-
QZK090507	Joystick Knob, Soft Ball, Ø 70 mm	XXX,-
QZK090508	Joystick Knob, Ball, Ø 35 mm	XXX,-
QZK090045	Joystick Knob, Allround, Ball Ø 48 mm	XXX,-
QZK090509	Joystick Knob, Chin Cup, Ø 37 mm	XXX,-
QZK090512	Joystick Knob, Stick, 80 x 15 mm	XXX,-
QZK090511	Joystick Knob, Mushroom, Ø 45 mm	XXX,-

(1) Only With 6 kph

(2) Highly Recommended With QZK180009 4-Pole Motor, 6 kph / 4 mph

(3) If LED Light And Indicator Is Chosen, Then This Is Required

(4) Choose Also A Remote Joystick

(5) Right Hand Attendant Control Only

(6) Not With Any Joystick Knob QZK090505-QZK090511

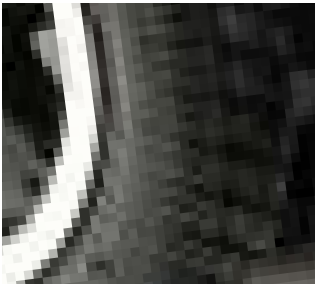
Electronic Programmers – R-Net		€
QZK090066	PC Programmer With Dongle, R-Net	XXX,-
Electronic Accessories Miscellaneous		
QZK090064	DTT Hand Held Programmer For R-Net With Connector Cable	XXX,-
Power Modules – R-Net		€
QZK110003	Power Module, R-Net, 90 A	XXX,-
QZK110004	Power Module, R-Net, 120 A	XXX,-
Seating / Lighting Module Control – R-Net		€
QZK110032	Actuator Control & Lights Module, R-Net, ISM-6L ⁽⁴⁾	XXX,-
QZK110204	Actuator Control Module, R-Net, ISM-6 ⁽⁵⁾	XXX,-
QZK110157	Light Module, R-Net, ISM-L	XXX,-
Attendant Controls		€
QZK110021	Dual Control	–
QZK110020	Joystick Mounted As Attendant Control (1) (2)	–
Special Controls		
OMNI2 Input Control Module – R-Net		€
QZK110740	OMNI2 incl. 2x Single Switch (Ø 64 mm) and Flexi Mount	–
OMNI2 Module Mount		€
QZK110122	OMNI2 Flexi Mount, Right	XXX,-
QZK110121	OMNI2 Flexi Mount, Left	XXX,-
Safety Devices		€
QZK090147	Remote Stop Switch (30 m Activation Range, Fit Via OBC Port) (3)	XXX,-

(1) Choose Also A Remote Joystick
(2) Right Hand Attendant Control Only
(3) Not With VR2

(4) To Be Offered Only When R-Net With Actuators AND Lights is selected
(5) To Be Offered Only When R-Net With Actuators NO Lights Is Selected

Drive Wheels & Castor Wheels & Mudguards

◀ BACK



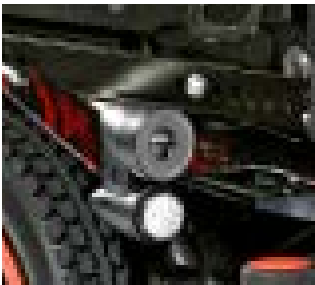
// QZK070069



// QZK080213

LED Lights & Chargers

◀ BACK



// QZK110201



// QZK160100 & QZK160101



// QZK160102



// QZK160103 & QZK160104

Back Cushion Type

◀ BACK



// QZK030214

Headrest Pads & Headrest Mounts

◀ BACK



// QZK030430 & QZK030431



// WHT030401-WH030402



// WHT030404



// QZK030433



// WHT030408



// WHT030409

Seat Cushion Type

◀ BACK



// QZK020120

JAY J3 Back

◀ BACK



// JAY030010

// JAY030011

// JAY030041

Armrest Type

◀ BACK



// QZK040122

Swing Away Legrest & Support Options

◀ BACK



// QZK050001
 // QZK050050
 // QZK050167

Remote Joystick – R-Net & Joystick Mounting

◀ BACK



// QZK110017



// QZK110013



// QZK110018



// QZK110056

Remote Joystick – VR2

◀ BACK



// QZK110036



// QZK110037

Joystick Knobs

◀ BACK



// QZK090505



// QZK090045



// QZK090507



// QZK090508



// QZK090509



// QZK090512



// QZK090511



// QZK090506

Electronic Programmers – VR2

◀ BACK



// QZK090063

Electronic Programmers – R-Net

◀ BACK



// QZK090066



// QZK090064

Power Modules – R-Net / Attendant Controls

◀ BACK



// QZK110004



// QZK110021

4-Actuator Control Box

◀ BACK



// QZK110055

R-Net OMNI2 Input Control Modules

◀ BACK



// QZK110172

B4M Wrapped Shrouds

◀ BACK



// QZK140008
 // QZK140009
 // QZK140010
 // QZK140011



// QZK140012
 // QZK140013
 // QZK140014
 // QZK140015



// QZK140016
 // QZK140017



// QZK140018
 // QZK140019

Comments For Adaptation



Q300 M Mini Kids

€

Base Price	00,000.00
Total Of Additional Equipment	
Packaging And Transport	
Exclusive VAT	
VAT	
Total Price	

Date

Signature

Day Month Year

**Sunrise Medical GmbH**

Kahlbachring 2-4

D-69254 Malsch/HD

Phone: +49 (0) 72 53 / 9 80-0

Fax: +49 (0) 72 53 / 9 80-222

E-Mail: kundenservice@sunrisemedical.de

www.SunriseMedical.eu